

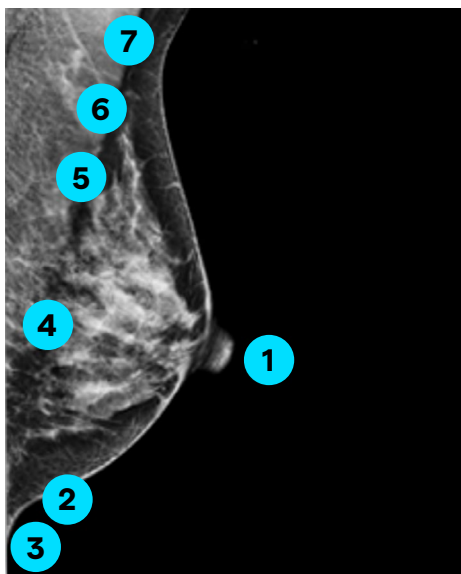
# Positioning

## Volpara® Analytics™ Technologist Training

### Notes

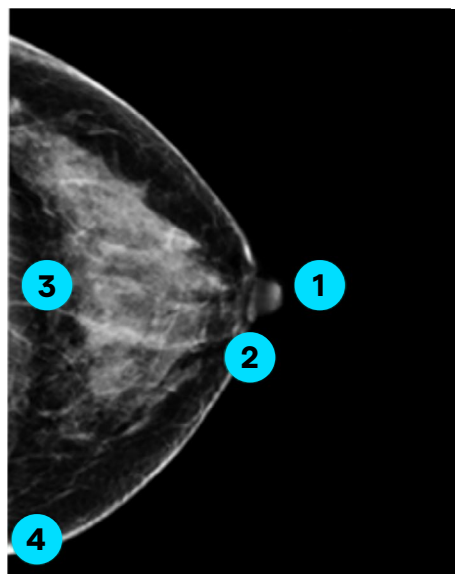
- Every CC and MLO view is evaluated by the Volpara® TruPGMI™ clinical function
- Volpara TruPGMI categorizes images based on metrics: how well they met, partially met, or didn't meet the metrics.

### Volpara TruPGMI Metrics for MLO View



- 1 Nipple in profile
- 2 Inframammary fold (IMF) visible
- 3 Inferior breast tissue has no cutoff
- 4 Pectoral muscle length
- 5 Pectoral muscle shape
- 6 Pectoral muscle adequacy
- 7 No pectoral skin folds

### Volpara TruPGMI Metrics for CC View



- 1 Nipple in profile
- 2 Nipple in midline of imaged breast
- 3 Posterior nipple line (PNL) within 1 cm of PNL on MLO view
- 4 Breast tissue has no cutoff

#### Perfect

Highest Diagnostic Quality

This mammogram is an example of excellent work by the technologist.

#### Good

This mammogram is high quality.

#### Moderate

This mammogram is acceptable quality; technologist would be unlikely to repeat image(s).

\* Extenuating circumstances, such as body habitus or mobility issues, may limit the technologist's ability to obtain an adequate study.

#### Inadequate\* \*\*

Lowest Diagnostic Quality

This mammogram is poor quality; technologist might repeat image(s).

\*\* Mosaic or tiled images may be categorized as Inadequate.

### Contact

Questions or issues, please contact [support@volparahealth.com](mailto:support@volparahealth.com)

# Compression

## Volpara Analytics Technologist Training

### Notes

- Compression is critical to image quality
- Volpara measures and displays compression in pressure (kPa)
- Pressure (kPa) depends on
  - Amount of applied force (dN, N, or lb.)
  - The contact area between the breast and the paddle
- Target compression is found to increase cancer detection<sup>1</sup>

### Breast Size, Force, and Pressure: Target Range\*

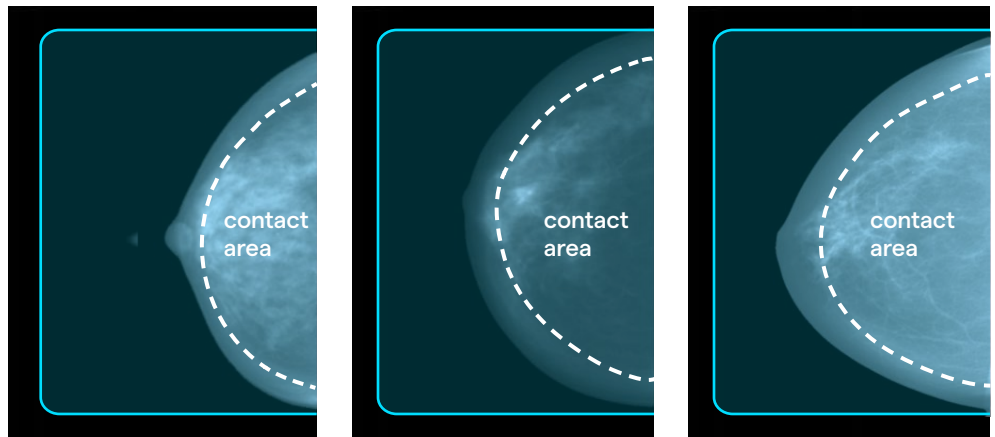
Pressure = Force ÷ Area

#### Breast size reference:

Small breast approx.  
0–500 cm<sup>3</sup>

Medium breast approx.  
500–1200 cm<sup>3</sup>

Large breast above approx.  
1200 cm<sup>3</sup>



Applied Force

\*Approx. values

7–16 lb.

(31–73 N)

14–30 lb.

(63–135 N)

17–37 lb.

(77–165 N)

Pressure Result

7–15 kPa

7–15 kPa

7–15 kPa

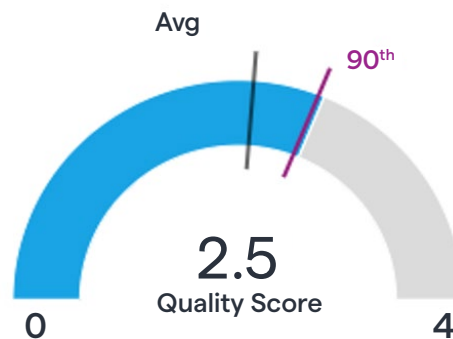
### Performance and Benchmarks

Weighted 60/40 in favor of positioning over compression performance.

A score of 4 would mean 100% of images were Perfect or Good and in the target compression range.

90th Percentile 2.5

Average 2.1



### Contact

Questions or issues, please contact [support@volparahealth.com](mailto:support@volparahealth.com)

### References

1. Holland et al. Breast Cancer Research (2017) 19:126