

# Volpara Health at SBI 2022

May 16-18, Savannah, GA  
Booth #209



Savannah here we come!

Visit Volpara Health at SBI booth #209 to learn how we can help your practice provide patients the best chance for early detection:

- Cancer Risk Assessment
- Mammography Quality and Reporting
- Breast Density Insights

## Attend a Learning Lab session:

Monday, May 16  
2:45 – 3:45pm and 4:00 – 5:00pm Eastern Time

### **Case Review: Understanding Your Patient Beyond the Risk Score**

The ability to explain your patient's risk score result is key to building credibility for your high-risk program with referrers, patients, and payors. Join a dynamic review of unique patient cases, surprising risk scores, the contributing factors, and the implications for clinical team recommendations and care delivery.

**REGISTER**

*Seating is limited.*



**Brian Drohan, PhD**  
Chief Clinical Scientist  
Volpara Health



**Kevin Hughes, MD, FACS**  
Director of Cancer Genetics  
McKoy Rose  
Professor of Surgery at Medical  
University of South Carolina

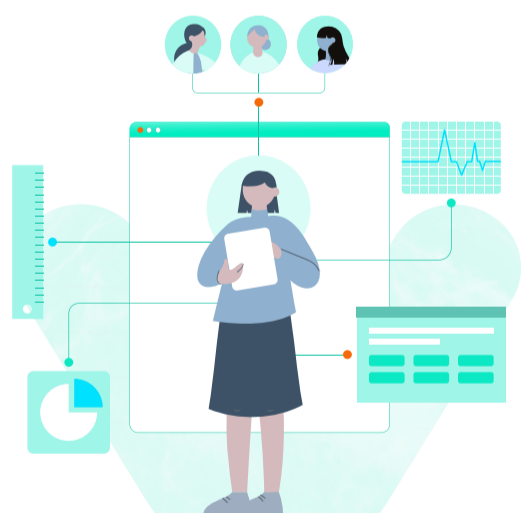
## WHAT'S NEW

### **Risk Pathways™**

Risk assessment is the agreed-upon method to identify patients who need personalized breast care. Personalized care needs a personalized workflow that integrates seamlessly into your workday. See how our software can help elevate new and established risk programs.

**LEARN MORE**

[Not at the show? Request a virtual demo.](#)



### **Analytics™ and Analytics in Action™**

Use powerful AI from Analytics to put objective mammography quality performance data in your hands. The new Analytics in Action program helps strengthen your culture of quality using objective insights, a recognition toolkit, and tailored onsite training to encourage continuous improvement and staff engagement.

**LEARN MORE**

[Not at the show? Request a virtual demo.](#)



© Volpara Health Limited. 2022. All rights reserved.

[Unsubscribe](#)